



Samford University
McWhorter School of Pharmacy
Pharmaceutical Sciences Research Institute

STABILITY TESTING

of Extemporaneously Compounded Preparations – Beyond Use Date –

samford.edu/go/PSRI

Stability testing determines a drug substance's or formulated preparation's integrity as a function of time and storage conditions. This data can be used to confidently assign a beyond-use date (BUD) to a compounded medication. Our pharmaceutical services team designs stability protocols and develops or uses existing validated stability-indicating assays to ensure accurate measurement of drug concentration in the presence of degradants. The studies are conducted over a predetermined period of time under recommended storage conditions to be used for the medication's lifecycle.

WHAT WE OFFER

- Design and conduct custom stability studies based on client specific goals.
- Develop stability indicating assays based on samples from forced degradation studies.
- Provide real-time reporting of results throughout the study.

LEARN MORE:

Greg Gorman, PhD

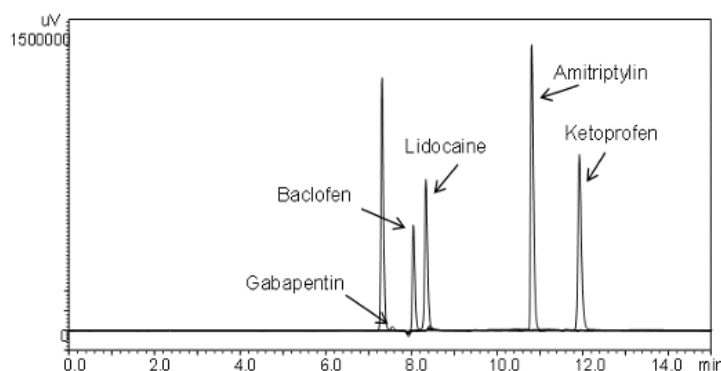
ggorman@samford.edu

205-726-4452

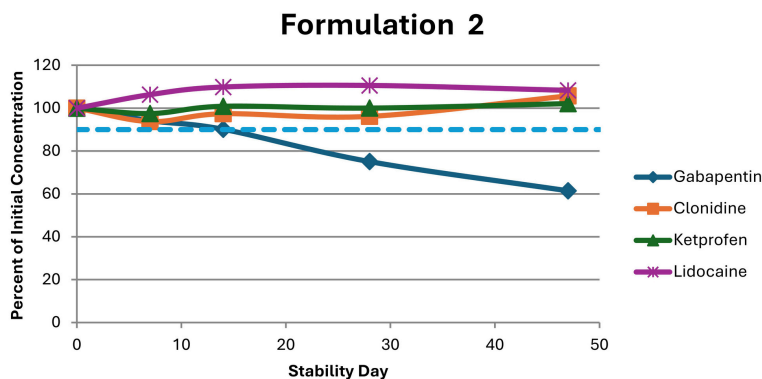
samford.edu/go/PSRI



Multi-API Chromatogram



Stability Graph



Formulation 2

